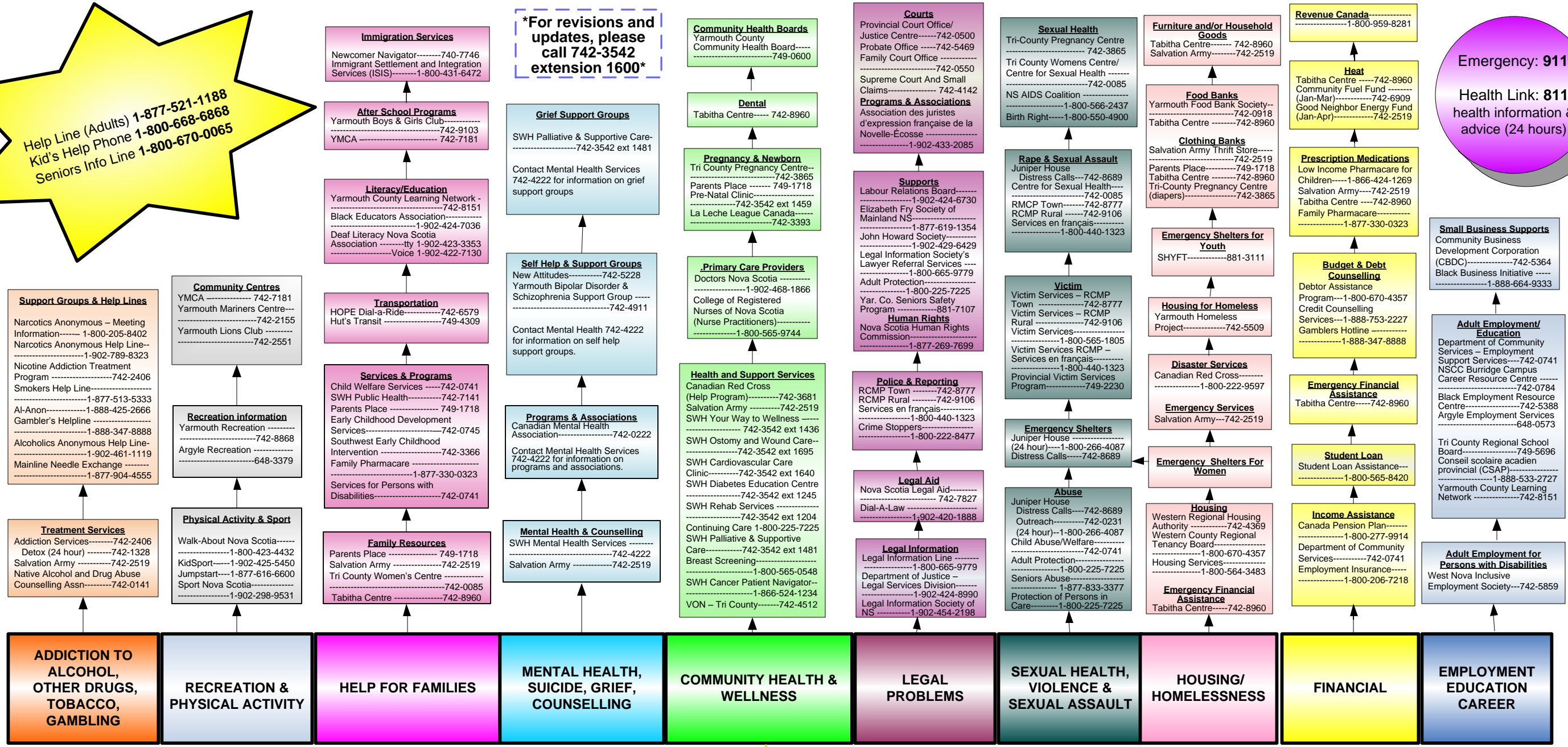


This tool was designed to assist service providers and inform residents of community resources. If you or someone you care about is experiencing a problem in any of the areas listed, use this flow chart to find resources that may help.

**Help Line (Adults) 1-877-521-1188**  
**Kid's Help Phone 1-800-668-6868**  
**Seniors Info Line 1-800-670-0065**

**\*For revisions and updates, please call 742-3542 extension 1600\***

**Emergency: 911**  
**Health Link: 811**  
health information & advice (24 hours)



This helping tree is for informational purposes only.

**YOU START HERE**